

Minor Environmental Geography

Putting the environment on a map.



How can we best organize our spatial demands, so both human and nature can continue to flourish and thrive?

Minor Environmental Geography

- Project (18 ects)
- Courses (10 ects)
- Electives (2 ects)

Total: 30 ECTS



Project Environmental Geography

Projects related to human interference with nature (positively or negatively)

Themes include the environment, geography, information technology combined to understand consequences human interactions with nature

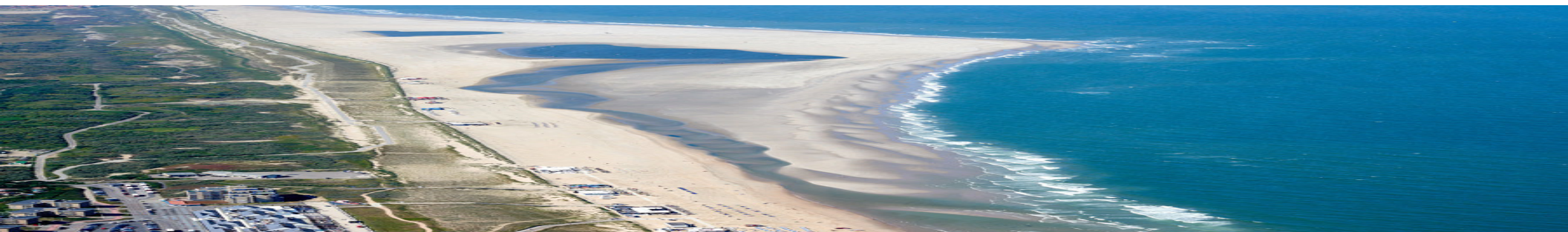
You will combine field- and laboratory work with extensive data analysis and computer mapping



Project Examples

1. Monitor the impact of nitrogen deposition on the ecology in the Dutch inland Dunes
2. Embryonic Dune Development Sandmotor
3. Positioning the location of the Fault Lines in East of Noord-Brabant (Peel area)

These all have in common that they monitor and if possible reverse human impact on nature.

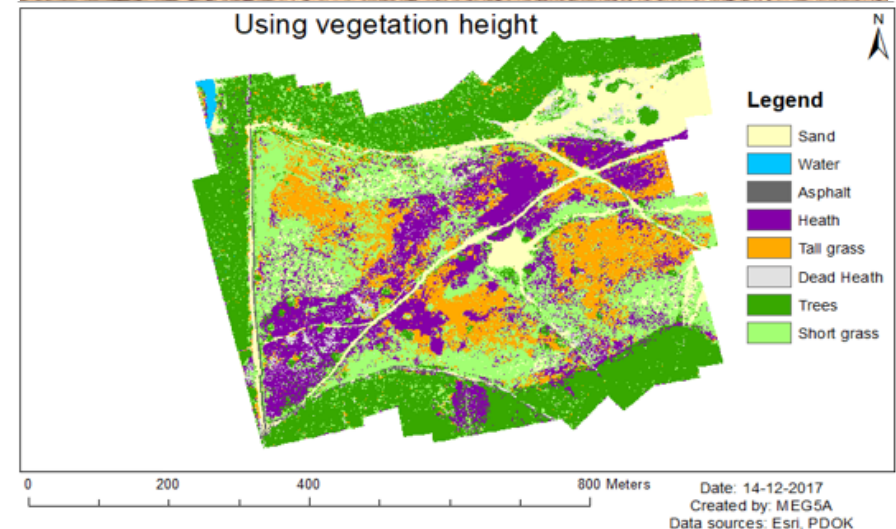


1. Monitor the impact of nitrogen deposition on the ecology in the Dutch inland Dunes

Protected Nature 2000 area greatly affected by the deposition of nitrogen

Project goal:

Develop a management strategy and a monitoring plan for the Loonse and Drunense Dunes and to visualize, and communicate the changes



2. Embryonic Dune Development Sandmotor

Coastal defense and protection sea level rise
(also contributes to recreation and nature)

Project goal:

*monitoring the distribution of embryonic
dunes and plants*

*Can drones make the monitoring more
efficient?*



3. Positioning the location of the Fault Lines in East of Noord-Brabant (Peel area)

The Peelrandbreuk is a geological fault line. One of the largest in the Netherland.

Unique features in the landscape, but on many location due to human interference not visible in landscape.

Project goal:

Determine the location of the fault lines and give advise how to restore the areas to create a Unesco Geopark.



FAULT LINES AS LOCATED BY AVANS (GEOCONSULTANTS)



Legend

- Fault line
- Buffer (margin of error)
- Wjst specific vegetation

Project Examples

1. Monitor the impact of nitrogen deposition on the ecology in the Dutch inland Dunes
2. Embryonic Dune Development Sandmotor
3. Positioning the location of the Fault Lines in East of Noord-Brabant (Peel area)

*Students disseminate the progress and results of the project with stakeholders using a **storymap**.*



Courses (10 ects)

- Spatial data analysis (GIS, Aerial Photography, Cartography)
- Big data Management
- Environmental Geography
- Preparation for lab- and fieldwork



International week

- Field week at Avans or one of our partner Universities in Finland (Helsinki or Tampere)
- Duration 1 week (Monday – Friday)



Examples of workshops

- Working in projects for a client
- Communication instruments
- System Thinking
- Ecosystem Services
- Biomimicry



Career orientation after the Minor Environmental Geography

- (Geo)consultant
- Waterboard / Municipality
- GIS specialist
- Ecology Specialist



Register for this minor?



Deadline 15th of March

More information can be found on blackboard or contact **Sandra** (sc.snel@avans.nl)